

LSD Quality Policy Statement

"We, at LSD, commit to:

- ♦ *provide timely, reliable, and high quality services that satisfy customer's needs and expectations;*
- ♦ *comply with ISO/IEC 17025:2017;*
- ♦ *conform with the applicable legal and statutory requirements;*
- ♦ *practice confidentiality and impartiality while applying the LSD policies and procedures in our work; and,*
- ♦ *continually improve our competence, Management System and laboratory services".*

Step-by-Step Procedure

STEP	APPLICANT/CUSTOMER/ (LABORATORY STAFF)	DURATION*	PERSON IN-CHARGE
1	Submit the sample	5 minutes	LSD Staff
2	Read and fill-out forms: Test Request Form Customer's Contract	10 minutes	LSD Staff
3	(Recording and coding of samples)	10 minutes	LSD Staff
4	For payment: Present the Order of Payment to the Cashier	5 minutes	PCA Cashier
5	Give one copy of the Claim Stub to LSD	5-10 minutes	LSD Staff
6	(Testing of samples)	Chemical: 5-10 working days Aflatoxin/PAH: 5-10 working days Microbiological: 10-15 working days	Science Res. Specialist Sr. Science Res. Specialist Science Res. Specialist Sr. Science Res. Specialist
7	(Data Processing)	20 minutes	Science Res. Specialist Sr. Science Res. Specialist
8	Present Claim Stub (upon Releasing of Test Report)	5 minutes	LSD Staff
END OF TRANSACTION			

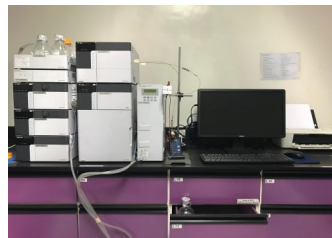
* For 1 sample under normal condition

FEES—Refer to the Schedule of PCA Laboratory Analysis Fees
(AO No.02, s. 2012)

PQCL Major Equipment



Gas Chromatograph (GC)



High Performance Liquid Chromatograph (HPLC)



Ankom Fat Analyzer



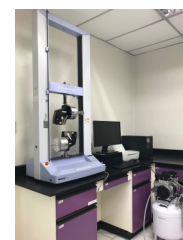
Lovibond Tintometer



Volumetric Karl Fischer (KF) Titrator



Biosafety Cabinet



Universal Testing Machine (UTM)



Polymerase Chain Reaction (PCR) Machine



Cold Incubator



Autoclave



Water Purifier



Product Quality Control Laboratory

Laboratory Services Division
Research and Development Branch

**ISO/IEC 17025:2017
PAB ACCREDITED
TESTING LABORATORY**

Laboratory Analysis Fees and
Sample Requirement Information



Contact Details:

Phone: (632) 8928-45-01 to 09 loc. 532

Email address: lsd@pca.gov.ph

Laboratory Analysis Fees

ISO/IEC 17025:2017 Accredited Parameters

PARAMETER	RATE (Php)
FOR POTABLE WATER / BEVERAGES	
1. E. Coli	500
2. Aerobic Plate Count	500
3. Heterotrophic Plate Count	500
4. Coliform Count	500
FOR ALL TYPES OF VEGETABLE OIL	
1. Free Fatty Acid	400
2. Peroxide Value	800
3. Iodine Value	800
FOR ANIMAL FEEDS (COPRA MEAL)	
1. Aflatoxin B ₁	3,000

Chemical Analyses

PARAMETERS	RATE (Php)
1. Oil	800
2. Moisture	400
3. Moisture and Impurities	1,000
4. Color	200
5. Free Fatty Acid (solid sample)	500
6. Peroxide Value	800
7. Iodine Value	800
8. Sulfur Dioxide	500
9. Protein	1,500
10. Carbohydrates	-
11. Ash	800
12. Volatile and Combustible Matter	800
13. Fixed Carbon	-
14. Saponification Value	800
15. Unsaponifiable Matter	1,200
16. Saponifiable Matter	1,200
17. Titratable Acidity	400
18. pH	250
19. Specific Gravity	500
20. Aflatoxin B ₁	3,000

Microbiological Analyses

PARAMETER	RATE (Php)
1. Salmonella	700
2. E. coli	500
3. Aerobic Plate Count	500
4. Coliform Count	500
5. Molds & Yeasts Count	500
6. Staphylococcus aureus	600
7. Water Activity	500
8. Brix/TSS	100

Sample Amount Requirements

Other Fees

PARAMETERS	RATE (Php)
1. Certification Fee	200
2. Training Fee (per person depending on methodology)	2,000 - 5,000

COMMODITY	AMOUNT OF SAMPLE NEEDED
Copra	5 Kg
Copra Meal/Pellets	2 Kg: 1.5 Kg (Chem & Afla) 500g (Micro)
Coconut Shell Charcoal	1 Kg
Coconut Oil (Crude, RDB, Cochin)	3 bottles (1 Liter/bottle)
Acid oil, Fatty Acid Distillate	1 Liter
Virgin Coconut Oil	500 mL (or in company's packaging taken from 1 production batch)
Desiccated Coconut	500 grams for every 100 bags per cut
Cooked acidified Nata de Coco	1 bottle or can (as packed) for every 100 boxes
Raw and Processed (Low Acid Nata de Coco	1 pack of 1 Kg for every 100 boxes
Coco Cream Powder, Creamed Coconut, Macapuno or Young Fruit Preserved, Frozen Coco Milk and Shredded Coconut	1 pouch/bottle/plastic (as packed) for every 100 boxes
Canned Coco Milk (gata), Coconut Juice/ Coco Water in cans or tetrapack	1 can or tetrapack (as packed) for every 100 boxes
Coconut Sap Vinegar	250 mL
Coconut Sugar	250 grams for every 100 boxes/packaging size
Coconut Flour	500 grams

Product Quality Control Laboratory

INFORMATION	
Schedule of Availability of Services:	Monday-Friday 8:00 AM—5:00 PM Without noon break
Who may avail of the Service:	Coconut Manufacturers/Processors/Desiccators Charcoal Manufacturers Nata de Coco Processors Coconut Oil Millers Virgin Coconut Oil Producers Coconut Sugar Producers Coconut Products and By-products Processors Other Government Agencies Private Sector/Individuals Academe
What are the Requirements:	Sample within the scope of the standard/test method Quantity of sample submitted is adequate Note: Submit separate samples for Chemical and Microbiological analyses
Duration: (under normal condition)	Chemical: 5-10 working days Microbiological: 10-15 working days